

Cat. 6A Panel Mount Cable RJ45 male-female with 2 screws, 50cm

Product number HX-NM25-05

Length 500mm



Product description

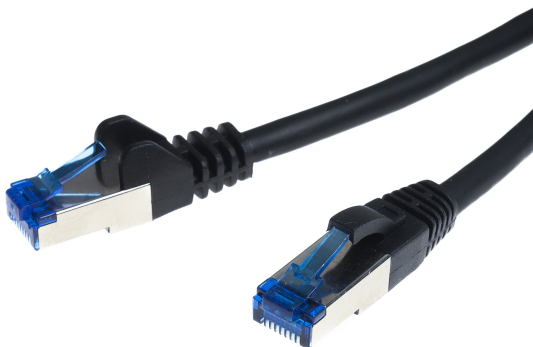
Cat. 6A Panel Mount Cable, RJ45 male-female with 2 screws, 50cm

Key features

- RJ45 panel mount cable for network Cat. 6A
- for mounting on an enclosure with corresponding cut-out
- CONNECTION 1: Screw-on RJ45 socket (8P8C, female), screw spacing 25mm (hole spacing for fastening)
- CONNECTION 2: RJ45 plug (8P8C)
- gold-plated contact surfaces guarantee an excellent, high-performance network connection
- specification: Cat. 6A, also suitable for Cat.6, Cat.5e or other RJ45 connections
- suitable for 10 Gigabit Ethernet 10BASE-T, 100BASE-TX, 1000BASE-T, 10/100/1000/10000 Mbit/s
- shielding class S/FTP (PiMF, Pairs in Metal Foil)
- also braided overall shielding (aluminium)
- high-quality thick copper conductor (CU) with AWG 27 BC (7/0.16mm, stranded)
- halogen-free: LSZH LS0H (Low Smoke Zero Halogen)
- max. bandwidth 500 Mhz
- colour: black
- colour coding/contacting: EIA/TIA 568B, assignment 1:1
- operating temperature from -20°C
- operating temperature up to 75°C
- scope of delivery: Cable incl. 2 screws (pre-assembled)
- cable diameter (approx.): 5.8 mm
- plug bend protection sleeve and latching lug protection
- CE, WEEE, RoHS compliant

More images

Typ des Rastnasenschutzes kann variieren.
Type of latching nose guard can vary.
Le type de protection de l'ergot peut varier.



Technical Data at a glance

- ✓ Bandwidth
max. 500 MHz
- ✓ Supports
10GBase-T networks
for 10-gigabit Ethernet
- ✓ Compatible
with 10/100/1000/10000 Mbit/s,
10BASE-T, 100BASE-TX,
1000BASE-T
- ✓ Pair sequence
according to EIA/TIA-568B
- ✓ LSZH-compliant
low smoke & zero halogen



Cat.6A





With RJ45 Connectors

for extending network components

- Bend protection**
and robust cable jacket protect the connectors against cable breakage
- RJ45 socket**
8P8C, with gold-plated contacts
- Mounting flange**
with 25 mm hole spacing
- Latch protection**
prevents the latch from snagging or breaking off
- RJ45-Stecker**
8P8C, with gold-plated contacts
- High-quality copper conductor**
with foil-shielded wire pairs and braided overall shielding (aluminium)

