

Cat. 6A Panel Mount Cable RJ45 male-female with 2 screws, 1m

Product number HX-NM25-10

Length 1000mm



Product description

Cat. 6A Panel Mount Cable, RJ45 male-female with 2 screws, 1m

Key features

- RJ45 panel mount cable for network Cat. 6A
- for mounting on an enclosure with corresponding cut-out
- CONNECTION 1: Screw-on RJ45 socket (8P8C, female), screw spacing 25mm (hole spacing for fastening)
- CONNECTION 2: RJ45 plug (8P8C)
- gold-plated contact surfaces guarantee an excellent, high-performance network connection
- specification: Cat. 6A, also suitable for Cat.6, Cat.5e or other RJ45 connections
- suitable for 10 Gigabit Ethernet 10BASE-T, 100BASE-TX, 1000BASE-T, 10/100/1000/10000 Mbit/s
- shielding class S/FTP (PiMF, Pairs in Metal Foil)
- also braided overall shielding (aluminium)
- high-quality thick copper conductor (CU) with AWG 27 BC (7/0.16mm, stranded)
- halogen-free: LSZH LS0H (Low Smoke Zero Halogen)
- max. bandwidth 500 Mhz
- colour: black
- colour coding/contacting: EIA/TIA 568B, assignment 1:1
- operating temperature from -20°C
- operating temperature up to 75°C
- scope of delivery: Cable incl. 2 screws (pre-assembled)
- cable diameter (approx.): 5.8 mm
- plug bend protection sleeve and latching lug protection
- CE, WEEE, RoHS compliant

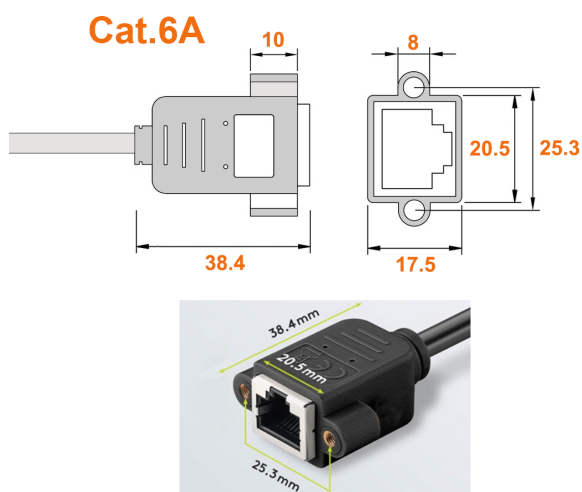
More images



Technical Data

at a glance

- ✓ **Bandwidth**
max. 500 MHz
- ✓ **Supports**
10GBase-T networks
for 10-gigabit Ethernet
- ✓ **Compatible**
with 10/100/1000/10000 Mbit/s,
10BASE-T, 100BASE-TX,
1000BASE-T
- ✓ **Pair sequence**
according to EIA/TIA-568B
- ✓ **LSZH-compliant**
low smoke & zero halogen

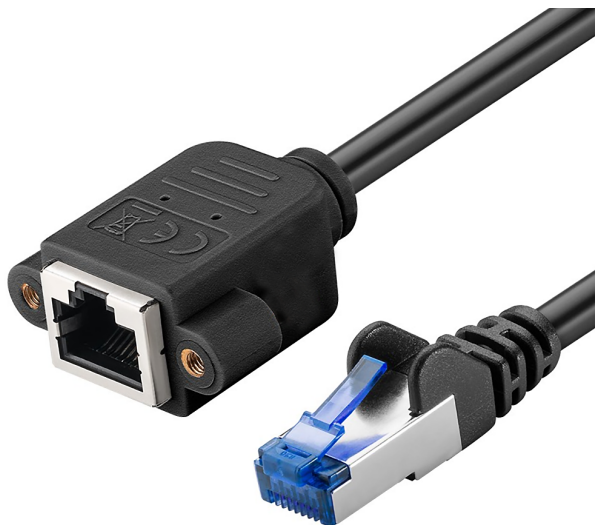


Cat.6A

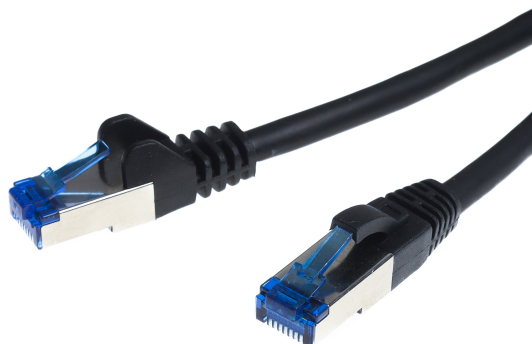


Cat.6A





Typ des Rastnasenschutzes kann variieren.
Type of latching nose guard can vary.
Le type de protection de l'ergot peut varier.



With RJ45 Connectors

for extending network components

